

# Northwest Region Labor Market Status Report -- September 2009

## Civilian Labor Force:

change since last...	month	year
Northwest Region	↑	↑
Pennsylvania	↑	↓
United States	↓	↓

## Employed Population:

change since last...	month	year
Northwest Region	↑	↓
Pennsylvania	--	↓
United States	↓	↓

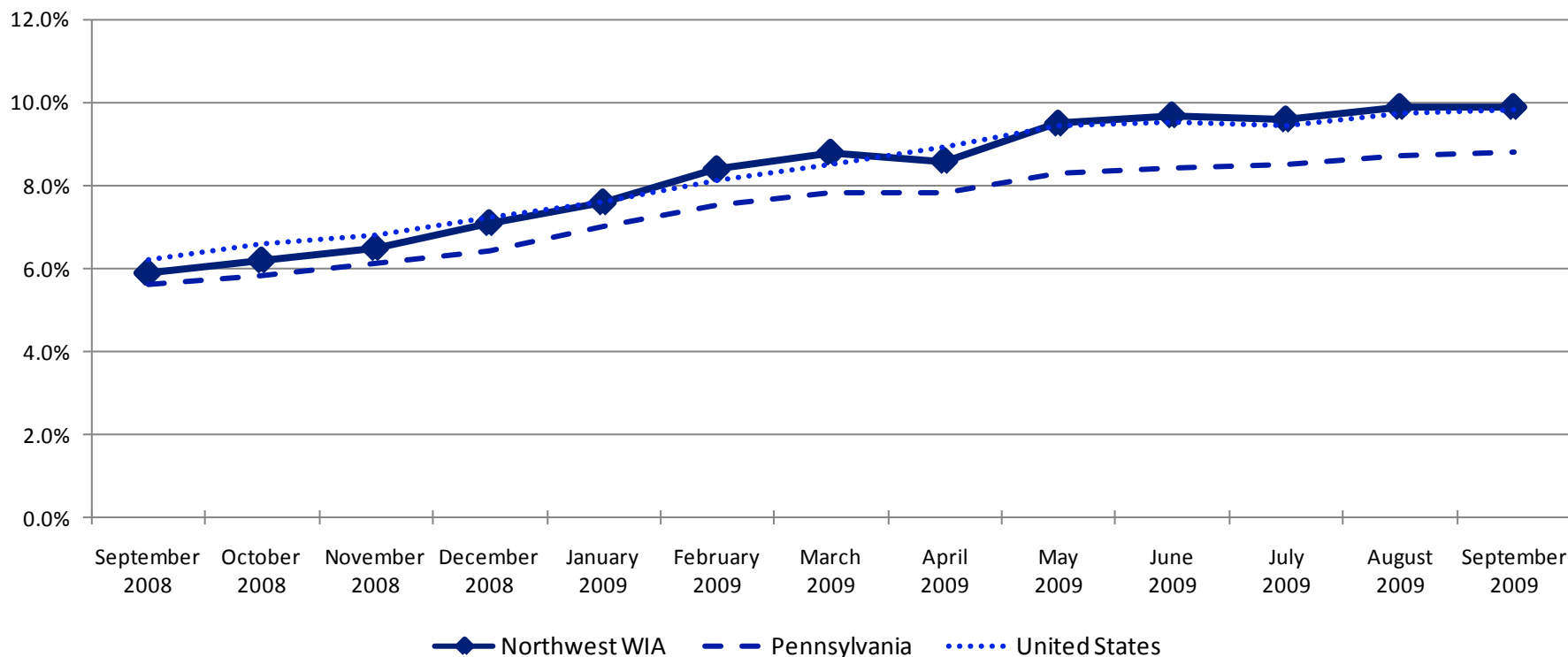
## Unemployed Population:

change since last...	month	year
Northwest Region	↓	↑
Pennsylvania	↑	↑
United States	↑	↑

## Unemployment Rate:

change since last...	month	year
Northwest Region	--	↑
Pennsylvania	↑	↑
United States	↑	↑

## Unemployment Rates

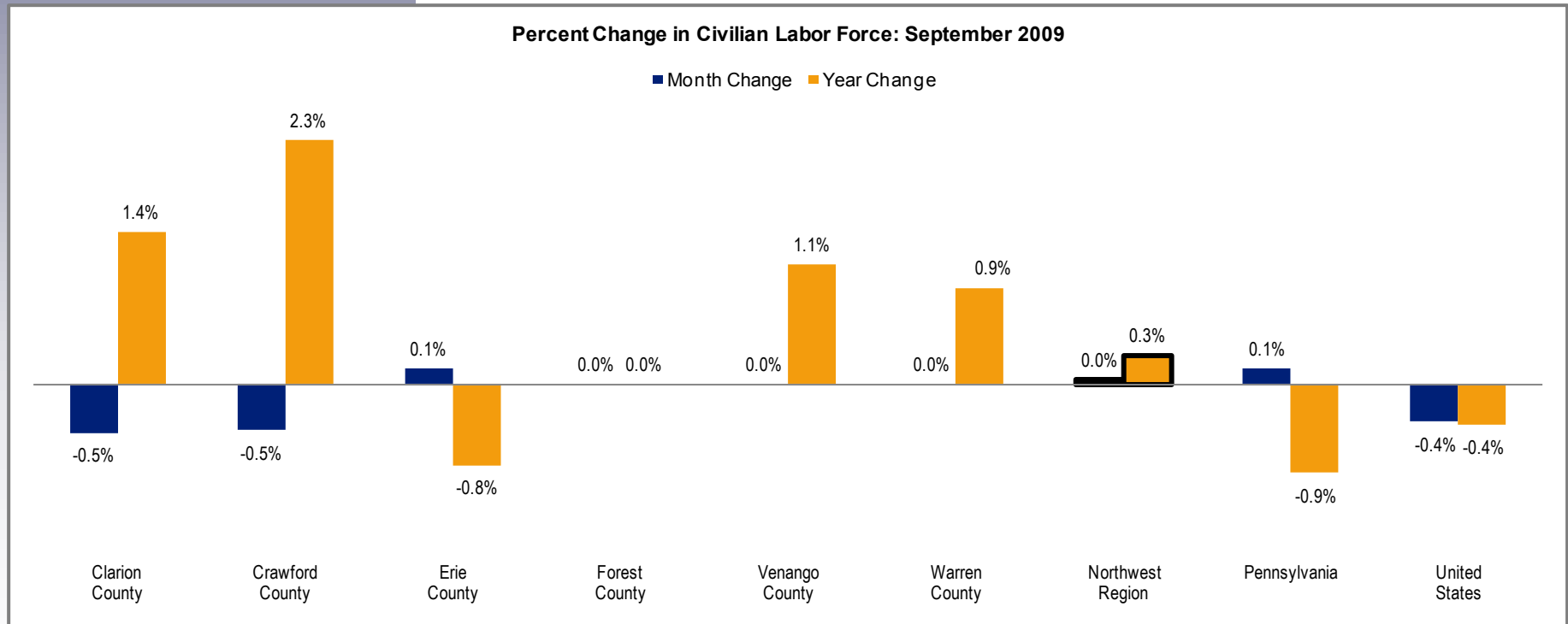


**Civilian Labor Force**

Clarion County	21,100
Crawford County	44,200
Erie County	139,800
Forest County	2,500
Venango County	26,700
Warren County	22,100

The labor force is comprised of individuals who are working, waiting for a layoff to end, or are actively seeking work. The graph below highlights changes in the civilian labor force as a percentage of an area's total civilian labor force.

	Change Since		
	September 2009	August 2009	September 2008
<b>Northwest Region</b>	<b>256,300</b>	<b>100</b>	<b>700</b>
Pennsylvania	6,368,000	9,000	-55,000
United States	154,006,000	-571,000	-615,000

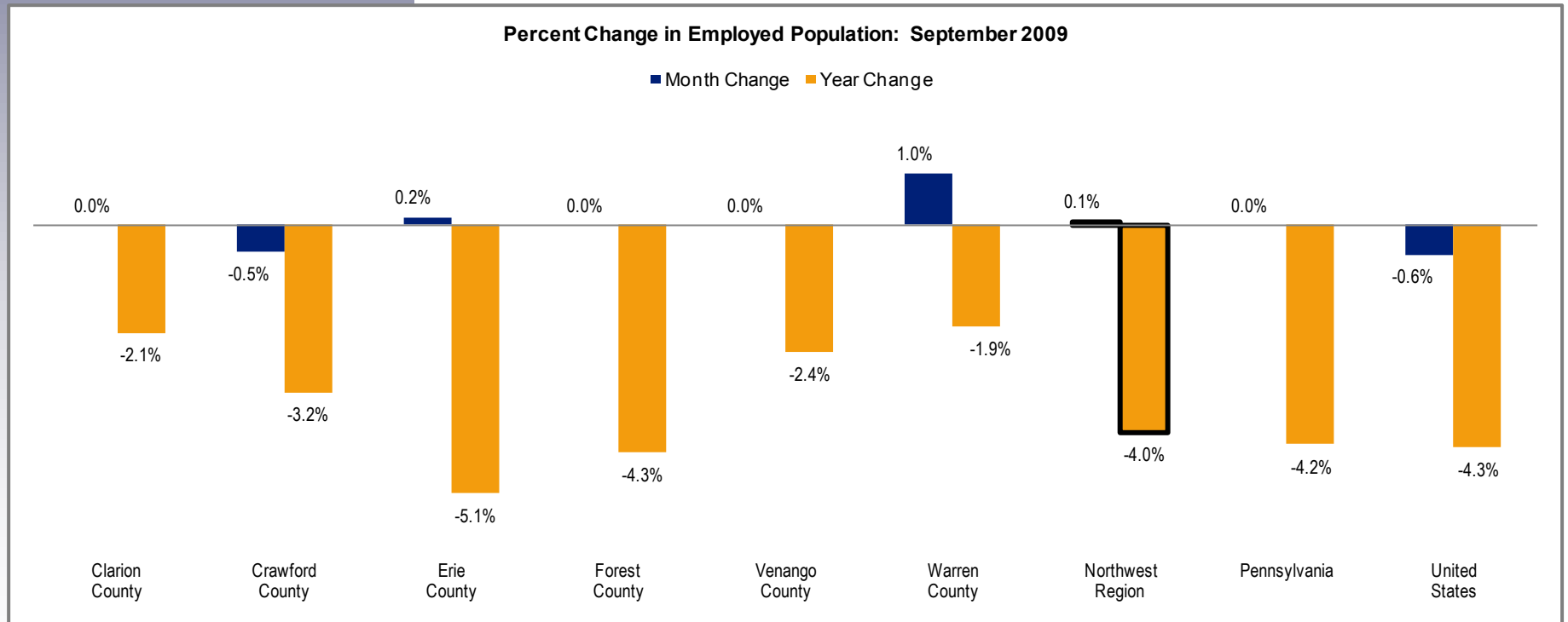


## Employed Population

Clarion County	19,100
Crawford County	39,400
Erie County	125,900
Forest County	2,200
Venango County	24,200
Warren County	20,300

The employed population includes individuals who are working. The graph below highlights changes in employment as a percentage of an area's total employment.

	September 2009	Change Since	
		August 2009	September 2008
<b>Northwest Region</b>	<b>231,000</b>	<b>200</b>	<b>-9,500</b>
Pennsylvania	5,809,000	0	-254,000
United States	138,864,000	-785,000	-6,165,000



## Unemployed Population

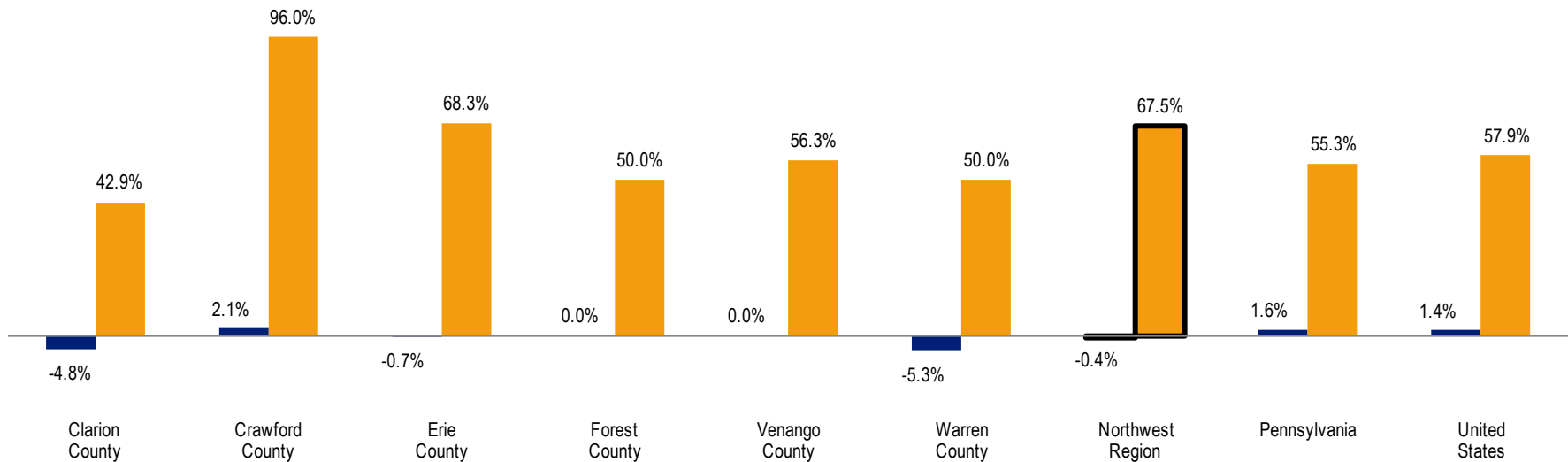
Clarion County	2,000
Crawford County	4,900
Erie County	13,800
Forest County	300
Venango County	2,500
Warren County	1,800

The unemployed population is made up of individuals who are not working, but are waiting for a layoff to end or are actively seeking work. The graph below highlights changes in unemployment as a percentage of an area's total unemployment.

	Change Since		
	September 2009	August 2009	September 2008
<b>Northwest Region</b>	<b>25,300</b>	<b>-100</b>	<b>10,200</b>
Pennsylvania	559,000	9,000	199,000
United States	15,142,000	214,000	5,550,000

Percent Change in Unemployed Population: September 2009

■ Month Change ■ Year Change



## Unemployment Rates

	September 2009	August 2009	September 2008
Clarion County	9.5%	9.8%	6.5%
Crawford County	11.0%	10.7%	5.9%
Erie County	9.9%	9.9%	5.8%
Forest County	11.8%	10.9%	7.9%
Venango County	9.5%	9.3%	5.9%
Warren County	8.0%	8.7%	5.4%
<b>Northwest Region</b>	<b>9.9%</b>	<b>9.9%</b>	<b>5.9%</b>
Pennsylvania	8.8%	8.7%	5.6%
United States	9.8%	9.7%	6.2%

The unemployment rate represents the proportion of individuals in the civilian labor force who are not working, but are waiting for a layoff to end or are actively seeking work. The graph below highlights changes in unemployment rates.

