

Northwest Region Labor Market Status Report -- October 2009

Civilian Labor Force:

change since last... month year

Northwest Region	↓	↓
Pennsylvania	↓	↓
United States	↓	↓

Employed Population:

change since last... month year

Northwest Region	↓	↓
Pennsylvania	↓	↓
United States	↓	↓

Unemployed Population:

change since last... month year

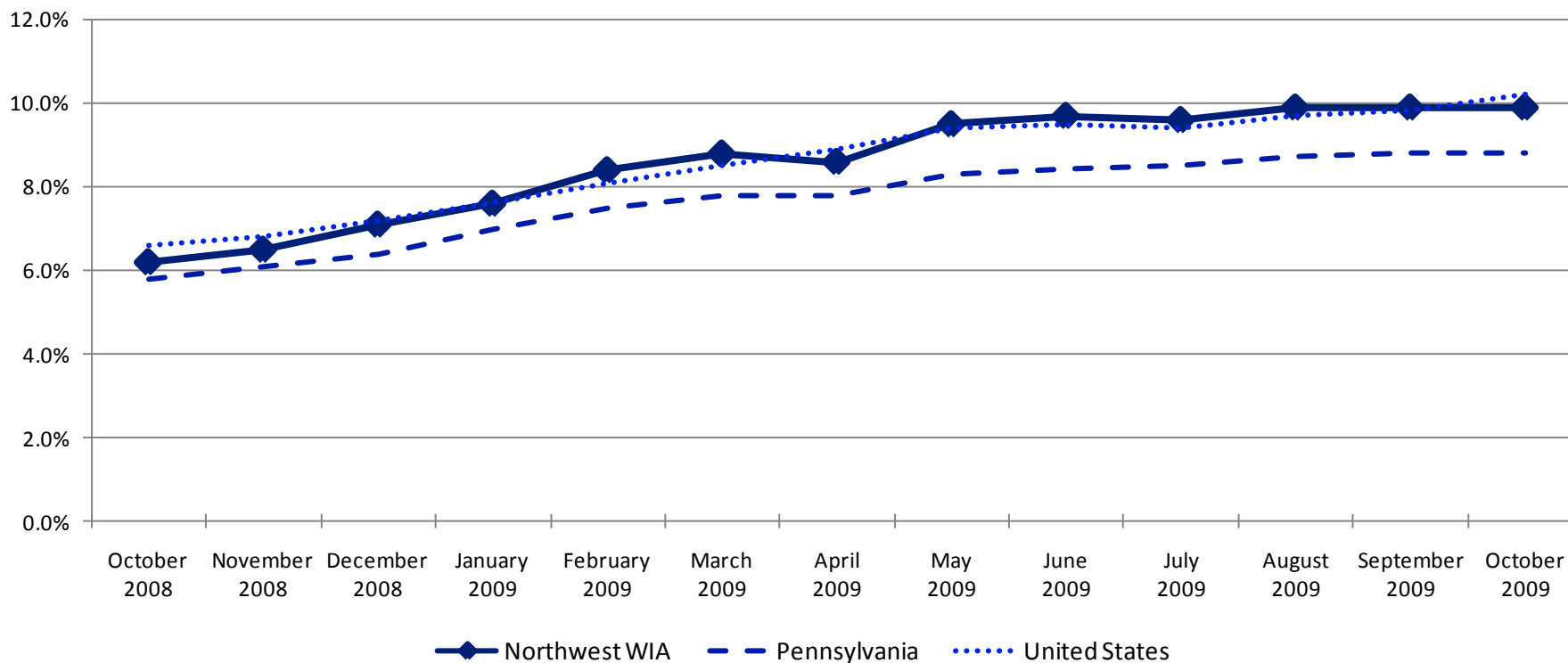
Northwest Region	--	↑
Pennsylvania	↑	↑
United States	↑	↑

Unemployment Rate:

change since last... month year

Northwest Region	--	↑
Pennsylvania	--	↑
United States	↑	↑

Unemployment Rates



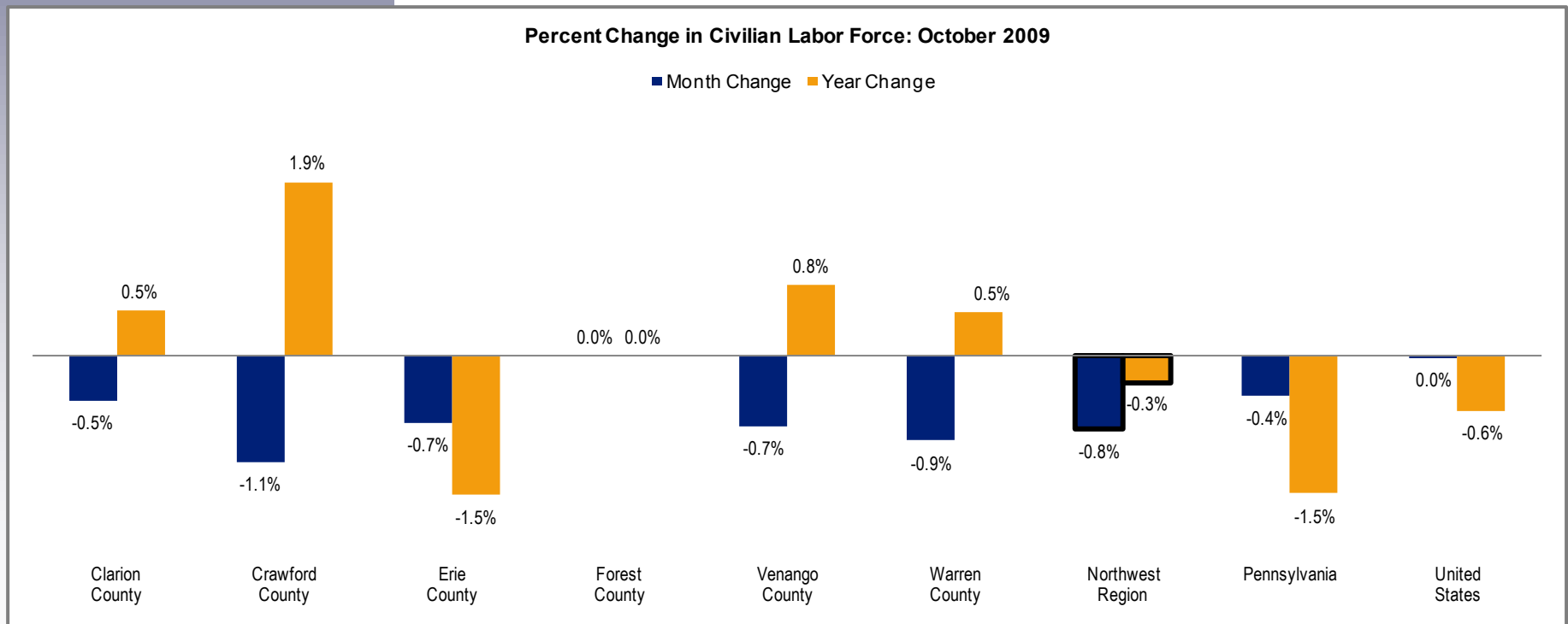
Civilian Labor Force

Clarion County	20,900
Crawford County	43,700
Erie County	138,800
Forest County	2,500
Venango County	26,500
Warren County	21,800

The labor force is comprised of individuals who are working, waiting for a layoff to end, or are actively seeking work. The graph below highlights changes in the civilian labor force as a percentage of an area's total civilian labor force.

	Change Since		
	October 2009	September 2009	October 2008
Northwest Region	254,300	-2,000	-700
Pennsylvania	6,340,000	-27,000	-95,000
United States	153,975,000	-31,000	-903,000

Percent Change in Civilian Labor Force: October 2009



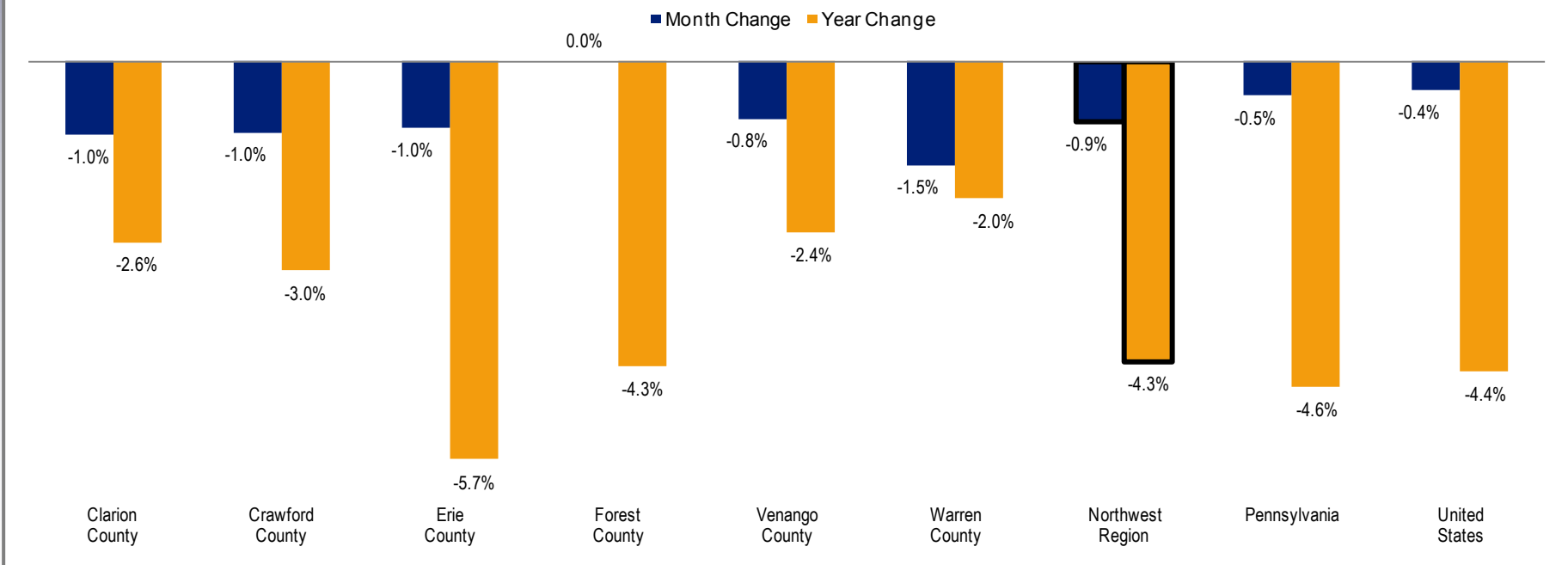
Employed Population

Clarion County	18,900
Crawford County	39,000
Erie County	124,800
Forest County	2,200
Venango County	24,000
Warren County	20,000

The employed population includes individuals who are working. The graph below highlights changes in employment as a percentage of an area's total employment.

	Change Since		
	October 2009	September 2009	October 2008
Northwest Region	229,000	-2,000	-10,200
Pennsylvania	5,779,000	-29,000	-281,000
United States	138,275,000	-589,000	-6,382,000

Percent Change in Employed Population: October 2009



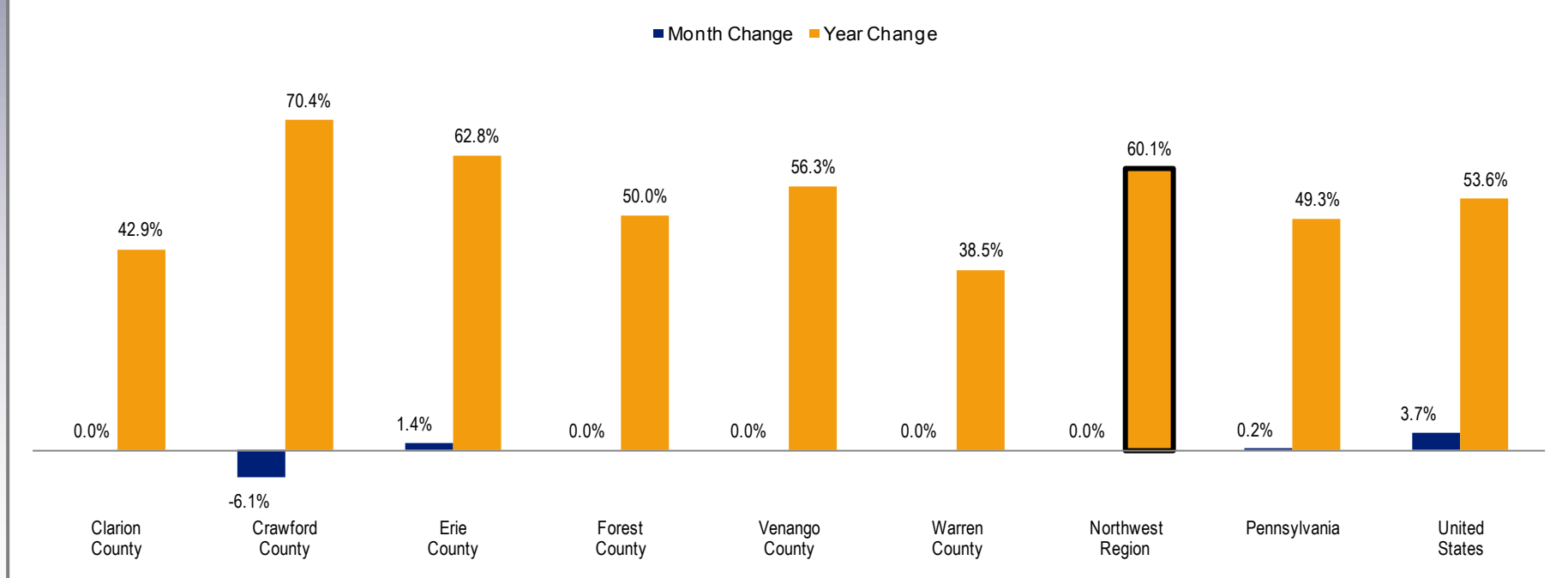
Unemployed Population

Clarion County	2,000
Crawford County	4,600
Erie County	14,000
Forest County	300
Venango County	2,500
Warren County	1,800

The unemployed population is made up of individuals who are not working, but are waiting for a layoff to end or are actively seeking work. The graph below highlights changes in unemployment as a percentage of an area's total unemployment.

	Change Since		
	October 2009	September 2009	October 2008
Northwest Region	25,300	0	9,500
Pennsylvania	560,000	1,000	185,000
United States	15,700,000	558,000	5,479,000

Percent Change in Unemployed Population: October 2009



Unemployment Rates

	October 2009	September 2009	October 2008
Clarion County	9.6%	9.4%	6.5%
Crawford County	10.6%	11.0%	6.3%
Erie County	10.1%	9.9%	6.1%
Forest County	12.2%	11.8%	8.2%
Venango County	9.3%	9.5%	6.1%
Warren County	8.2%	8.0%	5.8%
Northwest Region	9.9%	9.9%	6.2%
Pennsylvania	8.8%	8.8%	5.8%
United States	10.2%	9.8%	6.6%

The unemployment rate represents the proportion of individuals in the civilian labor force who are not working, but are waiting for a layoff to end or are actively seeking work. The graph below highlights changes in unemployment rates.

